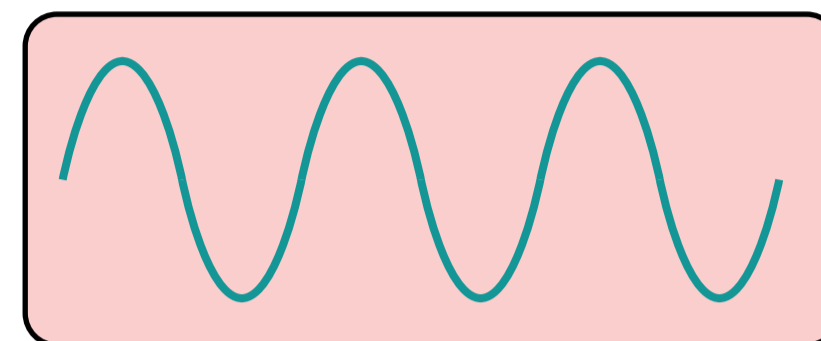
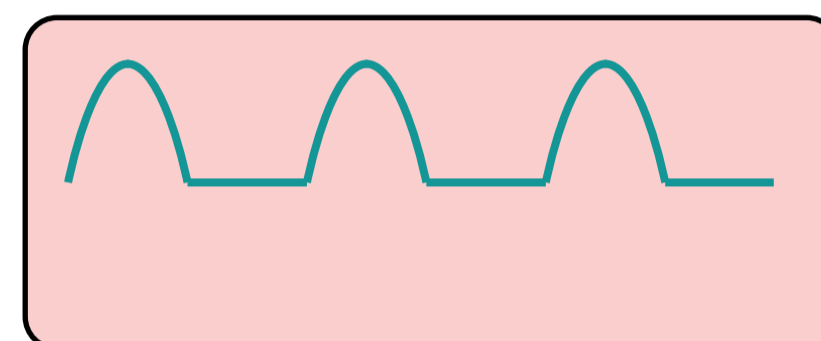
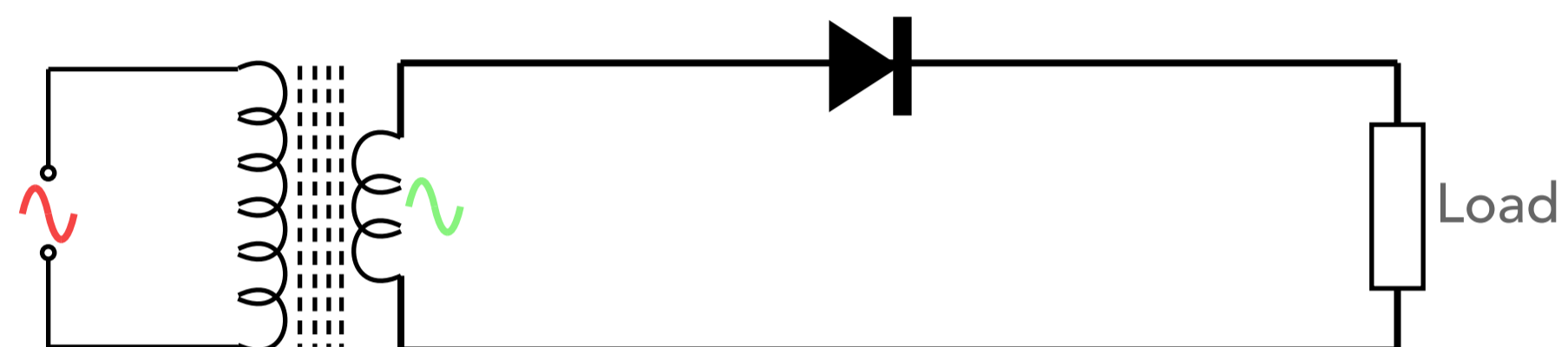


Rectifier Circuits & Their Waveforms

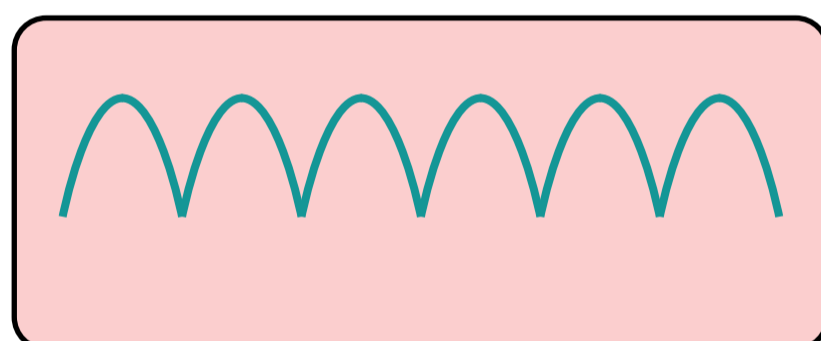
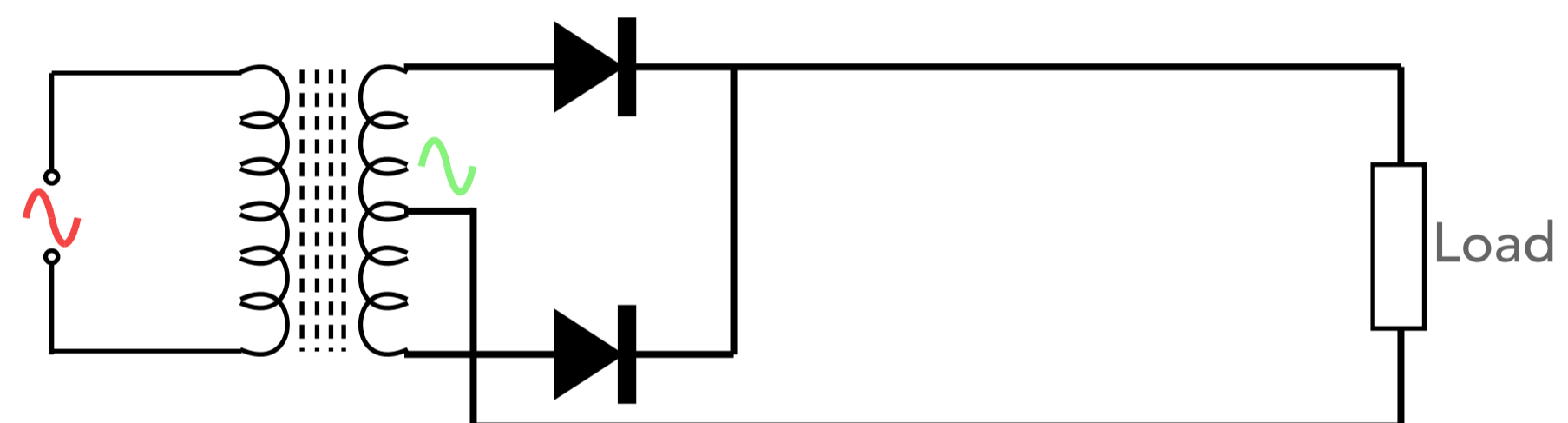
There are several different formats for rectifier circuits that are used within power supplies and other circuits. The output waveforms are given to show their performance.



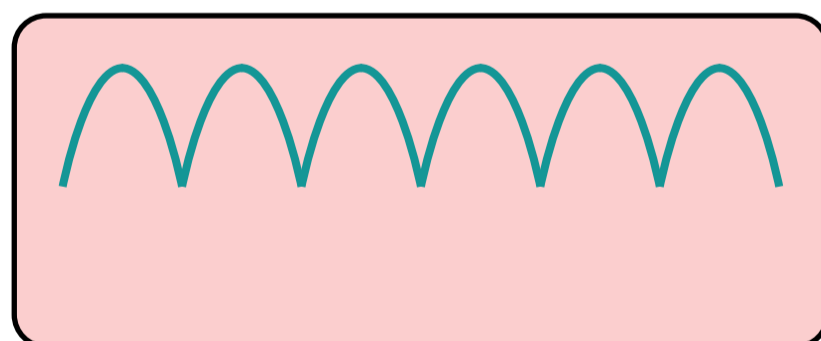
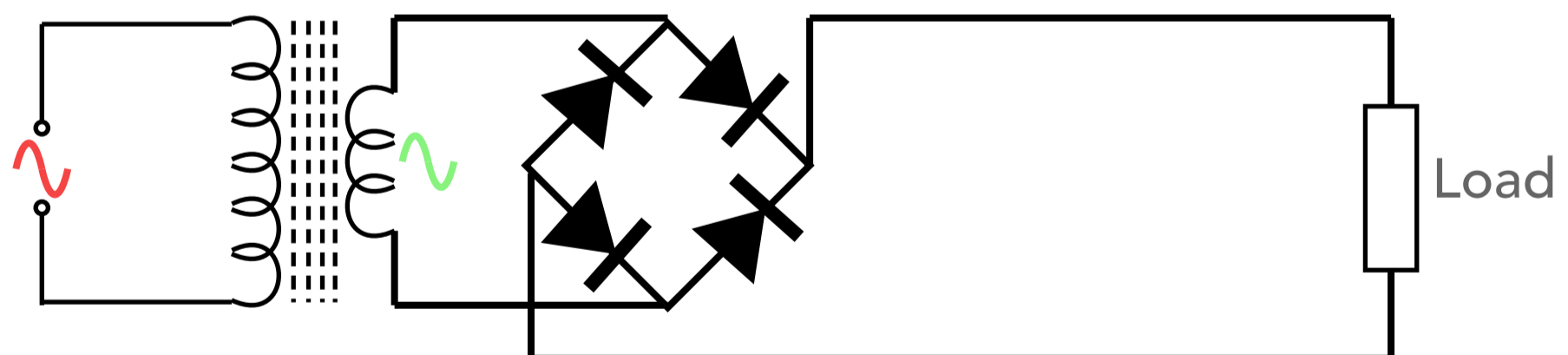
No rectifier



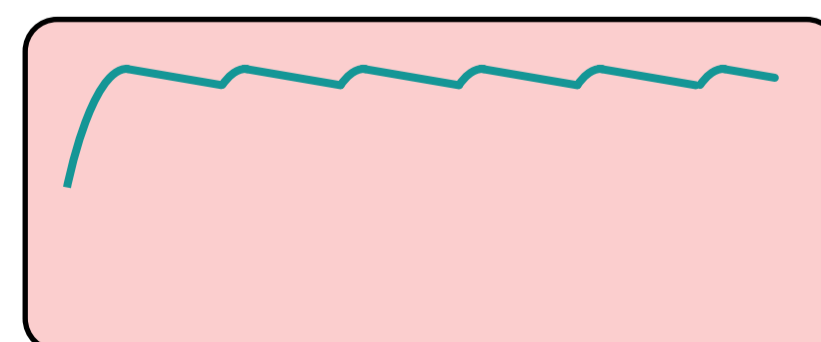
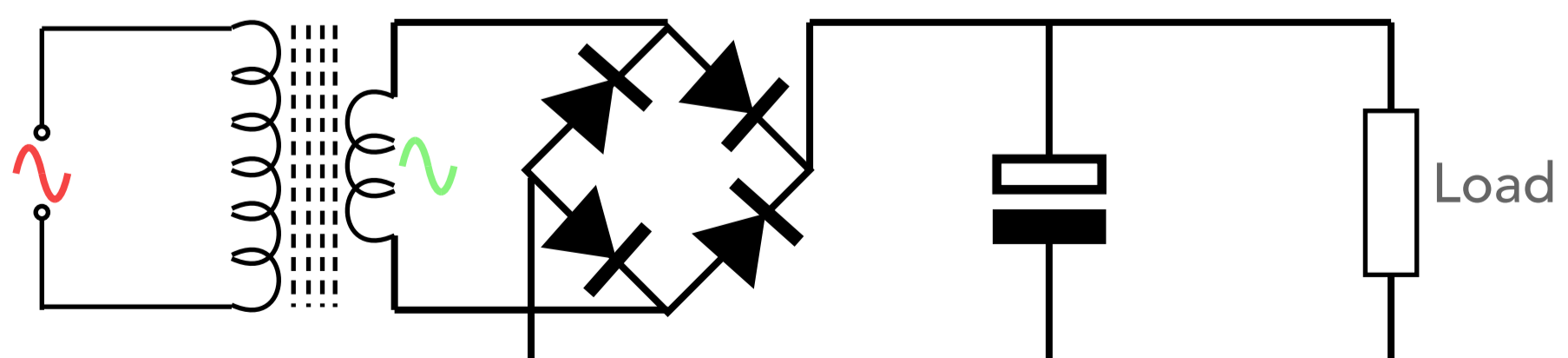
Half wave rectifier



Full wave rectifier (CT transformer)



Full wave rectifier (Bridge rectifier)



Full wave rectifier with capacitor smoothing